

USA

Dust Guard



Bosch & DeWalt

Dust Control Vacs

Div. of Scott Electric • 412-605-2992 (Direct)

+ Filter Upgrade for Greater Production

BOSCH - Automatic Self-Clean, HEPA Dust Extractors



300 CFM Vac
Upgrade:
\$270.00

Increases CFM @
End-of-Hose,
Performance,
Production,
Collection Yields.

Includes: 2" x 25'
Hose, (2) 2" ID
Hose Cuffs, (10) Air
Pulse Filter Bags

#VAC090AH **Call for current price ***

- 150 CFM, 97.3 H2O, 9-Gallon, 120v, 9.5A
- Size: 22.7"(h) x 14.5"(w) x 20.5"(l)
- Weight: 28.0 lbs., Hose: 1-3/8" x 9.85'.

#VAC090A

\$ Call for current price *

- 150 CFM, 97.3 H2O, 14-Gallon, 120 Volt, 9.5 Amp
- Size: 34.1"(h) x 14.75"(w) x 22.25"(l)
- Weight: 38.0 lbs., Hose: 1-3/8" x 9.85'.

#GAS20-17AH

\$ Call for current price *

- 300 CFM, 97.3 H2O, 14-Gallon, 120 Volt, 17.5 Amp
- Size: 36.0"(h) x 22.00"(w) x 26.00(l)
- Weight: 63.0 lbs., Hose: 1-3/8" x 16'.

DEWALT - Automatic Self-Clean HEPA Dust Extractors

#DWV010 **\$ Call for current price ***



- 150 CFM, 50 H2O, 8-Gal, 120v, 15.0 A
- HEPA Filter - Automatic Self-Clean
- Size: 20."(h) x 20.0"(w) x 20.0"(l)
- Weight: 21.0 lbs., Hose: 1-1/4" x 15'.

#DWV012 **\$ Call for current price ***



- 150 CFM, 50 H2O, 10-Gal, 120v, 15.0 A
- HEPA Filter - Automatic Self-Clean
- Size: 19.5"(h) x 18.5"(w) x 27.5"(l)
- Weight: 33.50 lbs., Hose: 1-1/4" x 15'.

* Upgrade the vac's performance with our Air Pulse Vac Bags - Tanks fill to capacity & the HEPA filter stays clean.

— see next page.

USA

Dust Guard



Div. of Scott Electric • 412-605-2992, #Direct

– One Bag Fits All the Vacs – Air Pulse Vac Bag Self-Cleaning, Heavy-Weight

Unstoppable Performance — For All Vacs

Universal — Fits Most Silica Dust Extractors & Wet / Dry Shop Vacuums

Superior Durability: Bag Fills 100% - No Tearing, Use Less Bag, Work Longer, Cartridge Filters Stay Clean



OSHA Silica Dust Compliant — Self-Clean, Heavy-Weight Filter Bag

Heavy-weight of the filter media inflates & deflates, self-cleaning itself when vacuums are turned off and on or during filter cleaning cycle with dust extractors. Dust is effectively released, powerful suction is assured, cartridge filters stay clean. Must to used with a 99% high efficiency cartridge filter.

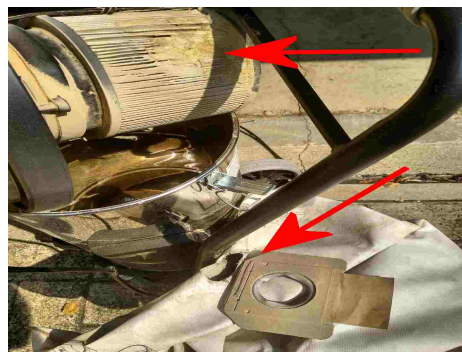


Prevents Filter Mishaps:

Regardless of the application or your vacuum - shop vac or HEPA - you can't afford the filter bag to fail.

Superior Production:

1. The outside of the bag stays clean
- HEPA or cartridge filter is kept clean
2. Total Seal - vacuum cold fireplace ash, volumes of silica dust even using a standard wet/dry vac - *without dust escaping into a room*
3. HD Strength – will not prematurely burst inside the tank even if over filled - *will not tear or burst when tossed in a dumpster*
4. Sealable Bag – meets EPA/RRP, OSHA Silica Dust regulations for handling & disposal of hazardous debris
5. Versatile - *collect anything at the same time*: ultra fine powder, sharp objects, moist debris, rotten food, hot mastic, creosote, etc



1) Inferior, low efficiency "fleece" bags allows dust to escape.

2) Bags with glued-on cardboard can't be overfilled (photo, left.)

Prevent Problems: suction drop, short HEPA filter life, changing bags all too often, lost production time, worker health and safety issues.

SPECIFICATIONS:

- 2.5" ID Collar - fits any wet/dry vacuum or dust extractor with a 2-1/2" OD (outside diameter) deflector port
- Fits: Bosch (all models including 300 CFM vac), Dewalt (both models), Dustless, Fein, Hilti 300 CFM vac, Makita, Milwaukee, Nilfisk, Ridgid, Shop-Vac, USA Dust Guard "Scaffold Vacs" (all models).

PRICING — PN: 136514

Please call for price / 5 pk !

Please call for price / 50 case.