

# USA

# Dust Guard









# Soff-Cut Saws

Vacuum Dust Ports Included

## Early Entry Saws

Div. of Scott Electric • 412 - 605 - 2992 - #Direct



MODEL	DESCRIPTION / PRICE	MODEL	DESCRIPTION / PRICE
 <p>5000</p>	<ul style="list-style-type: none"> <li>• 12" - 14" Blade Capacity</li> <li>• Depth-of-Cut: 4"</li> <li>• Weight: 495 lb., Electric Start</li> <li>• HP 25 Kohler, Self-Propelled, Gas</li> <li>• Sale Price: <b>\$29,339.00</b></li> </ul>	 <p>4000</p>	<ul style="list-style-type: none"> <li>• 10" - 13.5" Blade Capacity</li> <li>• Depth-of-Cut: 2-3/4"</li> <li>• Weight: 420 lb., Electric Start</li> <li>• HP 20 Kohler, Self-Propelled, Gas</li> <li>• Sale Price: <b>\$14,941.00</b></li> </ul>
 <p>4200</p>	<ul style="list-style-type: none"> <li>• 10" - 13.5" Blade Capacity</li> <li>• Depth-of-Cut: 3"</li> <li>• Weight: 488 lb., Electric Start</li> <li>• HP 22 Kohler, Self-Propelled, Gas</li> <li>• Sale Price: <b>\$26,409.00</b></li> </ul>	 <p>2000</p>	<ul style="list-style-type: none"> <li>• 9" &amp; 10" Blade Capacity</li> <li>• Depth-of-Cut: 1.5"</li> <li>• Weight: 488 lb., Electric Start, Gas</li> <li>• HP 9 Kohler, Self-Propelled</li> <li>• Sale Price: <b>\$12,534.00</b></li> </ul>
 <p>2500</p>	<ul style="list-style-type: none"> <li>• 9" - 10" Blade Capacity</li> <li>• Depth-of-Cut: 1.5"</li> <li>• Weight: 347 lb., Electric Start</li> <li>• HP 11 Kohler, Self-Propelled, Gas</li> <li>• Sale Price: <b>\$21,460.00</b></li> </ul>	 <p>150 150D</p>	<ul style="list-style-type: none"> <li>• 4" &amp; 6" Blade Capacity</li> <li>• Depth-of-Cut: 1.5"</li> <li>• Weight: 87 lb., Recoil</li> <li>• HP 4.3 Robin, Push, Gas</li> <li>• Sale Price: <b>\$2,789.00</b> (150)</li> <li>• Sale Price: <b>\$3,136.00</b> (150D)</li> </ul>

### ProEdge / Joint Profile Blades - fits 150 and 150D Saws

Size	Description	Item No	Price
6" x .375 V x .125 Pilot	V-Line XL6 - V21	542756151	<b>\$260.00</b>
6" x .625 V x .125 Pilot	V-Line XL6 - V23	542756152	<b>\$290.00</b>
6" x .625 V x .250 Pilot	V-Line XL6 - V25	542756153	<b>\$320.00</b>
6" x .750 V x .380 Pilot	V-Line XL6 - V38	542756154	<b>\$380.00</b>
6" x .1.0 V x .500 Pilot	V-Line XL6 - V500	542756155	<b>\$450.00</b>
Radius Line XL6 - R250	Radius Line XL6 - R250	542756156	<b>\$330.00</b>
Radius Line XL6 - R500	Radius Line XL6 - R500	542756157	<b>\$370.00</b>



# USA

# Dust Guard



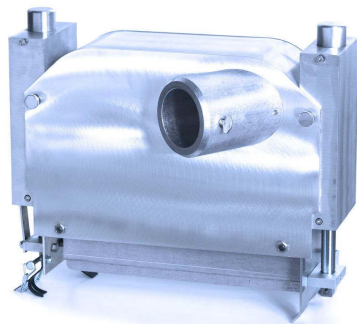
Div. of Scott Electric • 412 - 605 - 2992 - #Direct



# Soff-Cut Dust Guards

Discounted — with 10-Blade Order

## USA Made Fresh Cut Blades

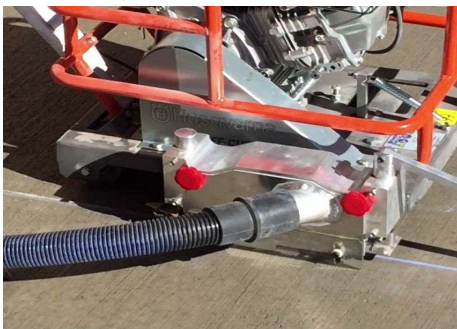


## Husqvarna Dust Guards

- more than a dust cover with a vac port
- labyrinth construction slows down, seals & restricts the dust - less CFM is needed

### Design / Features:

- Inside Plate - replaces the saw's internal Lexan plate, dust suppression pathway decreases the speed of the dust — *only giving it one way to flow*
- Outside Plate - matching half ensures that the only way for the dust to exit is through the vacuum port.



### Benefits of Dust Control when Sawing:

- Eliminates sweeping ! Instantly removes debris from the cut & keeps it out
- Labor decreases by eliminating the above ! Blade life increases 30%
- Reduces silica dust exposure for the operator and the surrounding area
- 6 guards are available for each Soff-Cut saw (pictures shown are not exact.)

**Discounted Guards**

with Purchase of (10) USA Made Fresh Cut Blades

Receive discount price with purchase of (10) Fresh Cut Blades

SOFF-CUT SAW	GUARD	PRICE	DISCOUNT PRICE
5000, 3" outlet	505494007	\$779.00	\$590.00
4200, 3" outlet	505494006	\$779.00	\$590.00
4000, 3" outlet	597218401	\$973.00	\$740.00
2500, 3" outlet	505494004	\$530.00	\$390.00
2000, 3" outlet	505494003	\$690.00	\$520.00
150/150D, 2" outlet	505494001	\$804.00	\$600.00



— [Click here for Fresh Cut Blade pricing](#) —