

USA

Dust Guard



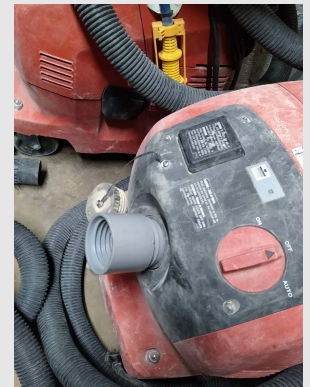
Div. of Scott Electric • 412 - 605 - 2992



Replacement Hoses, Cuffs & Filters - For All Vacs

One (1) Hose & Cuff - to Fit All Vacs

Our universal cuff fits the inlet port of these vacuums (all models): Bosch, Hilti, Makita, Metabo, Nilfisk, USA Dust Guard, others.



Eliminate Proprietary Connectors & Increase CFM: The inlet port opening on vacuums is over 2" but 1-1/4" & 1-1/2" hoses are supplied which *restricts airflow (CFM) & causes clogs*. Our universal cuff (D2020S) fits securely & uses 2" hose.

Benefits of using a 2" Hose - FACTS:

- ! maintains the inlet's diameter which *transfers the vacuum's rated CFM to the end-of-the-hose where it is needed*
- ! motor will sound better, last longer, run cooler, perform better (airflow & CFM is improved), draw less amperage
- ! OSHA's Silica Dust Regulation - recommends using a 1.5" or 2" hose, not 1-3/8"
- ! **Want to further increase production *plus* keep the HEPA filter clean *and* the motor *and* circuit from overheating? — use our Air Pulse Filter Bag (right - see page 3 for info.)**



One (1) Hose & Cuff Assembly - Fits All Vacs & Silica Dust Extractors

Fits: Bosch (all models), Ermator, Hilti (300 CFM model), Husqvarna, Makita, Metabo, Milwaukee, Nilfisk, USA Dust Guard "Scaffold Vacs".



\$110.00

Assembly includes: (2) Hose Cuffs (#D2020S) & 2" x 25' Hose (#233060)

- ! Cuffs (2) - one installs into the vac's inlet port & the other fits dust exhaust ports with a 2" OD such as most floor grinders & tuck point shrouds from USA Dust Guard, Dust Director® & Metabo. The cuff's internal thread accepts 2" hoses.
- ! Hose, 2" x 25' - Flexible, Lightweight & Durable. Hose's smooth bore interior assures maximum airflow without any chance of dust accumulation. Hoses with interior ribs or valleys allow dust to accumulate which creates a heavy hose and drastically restricts airflow (CFM.) When used on scaffold the 2" hose is typically cut into 2 or 3-sections.

2" x 25' Hose & (2) D2020S Cuffs
For additional cuffs see next page.

Individual Items



Hose Cuffs – Universal, screw-on cuff threads onto the hose, eliminates proprietary connectors. Made in the USA of high quality, soft vinyl.

Soft, Pliable Hose Cuffs
Thread-on x Smooth-end



2" Hose: Thread-on Cuffs

- D2020S | 298665 — 2" ID Smooth-End ~ attaches to dust shrouds with 2" OD. **This cuff is used as an inlet cuff for most vacuums & silica dust extractors.** \$10.00
- D2020SS — **SWIVEL** - 2" x 2" ID Smooth-End ~ identical to the above D2020S cuff with 360° Swivel Connection. \$15.00
- D2015S | 226652 — 2" x 1.5" ID Smooth-End ~ attaches to dust shrouds with 1.5" OD (Bosch TP & cup wheel shrouds) & our Universal Adapter #119221. \$17.00

1-1/2" Hose: Thread-on Cuffs

- #201751 | D1512S — 1.25" ID Smooth-End ~ attaches to dust shrouds with 1.25" OD including our "blue" HD cup wheel shrouds and Dewalt's tuck pointing and surface grinding cup wheel shrouds. \$13.00
- #168896 | D1515S — 1.5" ID Smooth-End ~ attaches to dust shrouds with 1.5" OD (Bosch TP & cup wheel shroud & Metabo 'clip-on' tuck shroud) & our Universal Adapter #119221. Inlet Cuff for DW012 Vac to use 1-1/2" hose. \$9.00
- #194324 | D1520S — 2.0" ID Smooth-End ~ attaches to dust shrouds with a 2" OD (USA Dust Guard, Metabo, Dust Director®). \$9.00
- #201055 | D1515T — **COUPLER** — 1.5" ID Dual Threaded-Ends ~ used with the Glitter Bit Dust Controller and to connect [2] 1.5" hoses together. \$9.00

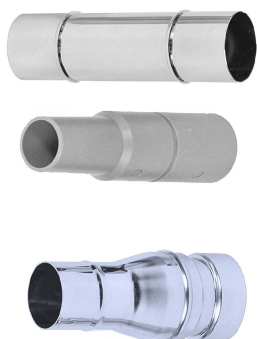
1-1/4" / 1-3/8" Hose: Thread-on Cuffs

If you want to continue to use the 1-1/4" or 1-3/8" hose (from Bosch, Dewalt & Hilti) the following cuffs thread onto their hose.

- #201751 | D1212S — 1.25" ID Smooth-End ~ attaches to dust shrouds with 1.25" OD including our "blue" HD cup wheel shrouds and Dewalt's tuck pointing and surface grinding cup wheel shrouds. \$9.00
- #201064 | D1215S — 1.5" ID Smooth-End ~ attaches to dust shrouds with 1.5" OD including all Bosch tuck pointing shrouds. \$13.00
- #109015 | D1220S — 2.0" ID Smooth-End ~ attaches to dust shrouds with 2.0 OD including USA Dust Guard and Metabo. \$19.00



Coupler | Universal Adapter | 3" Enlarger



- #D-HC | Coupler — Joins a 1.5" or 2" hose together or transits from a 1.5" to 2" hose. Both ends of the coupler are 2.0" OD, use any above cuff with a 2" ID. \$18.00
- #119221 | Universal Adapter — 1.5" OD x Taper End. Taper end + unique material securely installs and hold itself into most dust ports including European, Asian, Hilti, Dewalt. Uses the 1.5" ID cuffs to the adaptor's 1.5" OD. \$19.00
- #H32T | Enlarger — attaches a 1.5" or 2" hose to 3" OD dust ports. 3" end is secured to the outlet with a metal banding clamp (not included.) Select any 2" ID cuff to the enlarger's 2.0 OD. \$29.00

Hose – 2 Types: Super Flexible & Crushproof – both with a Smooth Interior



2" x 25' Hose
#233060 \$90.00

2" x 25' - Super Flexible, Lightweight, Durable

! A+ for tuck pointing, drilling, chiseling, sawing, surface grinding

! **Advantages of using a 2" hose:**

- 1) by maintaining the same diameter from the tank (2" at the inlet) the vacuum's CFM is transferred to the end of the hose *where it matters*
- 2) a reduction from 2" to 1-1/4" is too severe, it causes debris jams and prevents the motors and circuits from running cool.

1-1/2" x 25' Hose
#231578 \$70.00

1-1/2" x 25' - Identical characteristics to the above 2" Hose

! A+ for tuck pointing, drilling, chiseling, sawing, hand grinding

! Sold in 25' lengths, typically cut to the length you need

2" x 25' Hose
#D2025C \$110.00

2" x 25' - Flexible, HD Crushproof

! Recommended for floor grinders and walk-behind saws

! Smooth interior - no corrugations (same as the Super Flexible hose).

Collection Bags: Air Pulse & Longo Pac



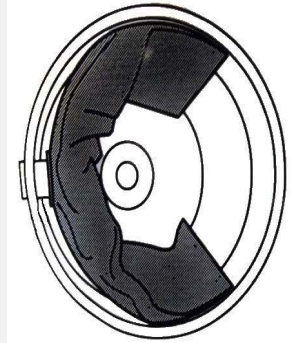
Air Pulse Filter Collection Bag

— Best upgrade you can make for any vacuum

"One Bag Fits All the Vacuums"

Stronger, Better Quality, Superior Collection Yields

- ! Outperforms, *outlasts* any "fleece", cloth or paper bag 10:1 - will not tear or accidentally burst
- ! Keeps everything clean: outside of the bag, inside of the tank, HEPA filter!



PN: 136514

Universal - Fits: Bosch (all models), Dewalt (both models), Hilti (300 CFM model), Makita, Milwaukee, Nilfisk, Ridgid, Shop Vac, USA Dust Guard Scaffold Vacs (all models), others. \$60.00/5 pk N \$500.00/50 pk.











Longo Pac, Plastic Bags

PN: 184621


Fits All Longo Pac
Dispensers
72 Ft., 6 Mil

\$109.00
4-Cnt Box
6 Boxes Ship
Free

Cartridge Filters

Type	Item No.	Description	Fits Vacuum	Price
	184619	HEPA Filter, 9 SqFt 12 / Case	Ermator / Husqvarna S-Series S13, S26, S36 Saw Sales Ultra Vac 1250, 950	\$74.00
	PAV0104 PAV0011	HEPA Filter, 9 SqFt	Pearl PVA18 Pearl PAV26, PAV36	\$128.00
	805544267359	Conical Pre-Filter, 10 SqFt	Ermator / Husqvarna - S13	\$170.00
	805544270915	Conical Pre-Filter, 18 SqFt	Ermator / Husqvarna - S26	\$199.00
	805544270922	Conical Pre-Filter, 40 SqFt	Ermator / Husqvarna - S36	\$244.00
	PAV0105	Conical Pre-Filter, 12 SqFt	Pearl - PAV18	\$178.00
	PAV0014	Conical Pre-Filter, 18 SqFt	Pearl - PAV26	\$178.00
	PAV0075	Conical Pre-Filter, 40 SqFt	Pearl - PAV36	\$178.00
	VF130H	HEPA Flat Filter, 99.95% @ 0.3 Microns	Bosch 9 - 14 Gallon Models	\$109.00
	VS430H	HEPA Flat Filter, 99.95% @ 0.3 Microns	Bosch - 300 CFM 17 Gallon Model	\$99.00
	302001095	HEPA Wet/Dry Filter	Nilfisk - Aero 26, 31	\$135.00
	302000490	Wet/Dry Filter	Nilfisk - Attix 30, 50	\$ 74.00
	107413555	HEPA Filter, 99.95% @ 0.3 Microns	Nilfisk - Attix 33, 44	\$135.00
	10413540	Wet/Dry Filter	Nilfisk - Attix 33, 44	\$ 69.00
	DW9330	HEPA, Wet/Dry Filter	Dewalt - DWV010, DWV012	\$69.00 2 Pk

Replacement Filters — for USA Dust Guard “Scaffold Vacs”

12-33	HEPA Filter	USA Dust Guard SCAFFOLD VACUUMS	\$169.00	
12-32	Pre-Filter		The first (4) filters are used in all 3 Scaffold Vacuums	\$3.40
12-31	Space Filter		\$12.90	
12-30	Protection Filter Bag		\$15.90	
184621	Air Pulse Bag Fits all 3-models		Air Pulse Filter Collection Bag	\$60.00 / 5 Pk \$500.00 / 50 Bx

Dust Shroud Cross Reference — Connection Chart: Hose to Dust Shroud Connection

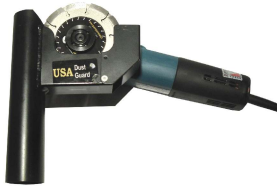
USA Dust Guard
Dust Director®, Metabo

Universal Cup
Wheel Shrouds

Die Grinder
Dust Guard

Dewalt Tuck Pointer

Bosch Tuck Pointer



Size: 6"

Sizes 5", 7"

Glitter Bits

Size 6"

Size 5"

Use cuff D1520S
or D2020S

Use cuff D1512S or
Universal Adapter with
D1515S or D2015S

Use 1-1/2" Dual Thread
Cuff, D1515T

Use cuff D1212S or
Universal Adapter w/
D1515S

Use cuff D1215S,
D1515S or D2015S

Bosch Guard

Cup Wheel Shrouds

Tuck Point Guard

Rubber Dust Boot

Drilling



Size 5"

Hilti, size 5" and 7"

Hilti, size 5"

Fits SDS Max Rotary
Hammers & 15#
Pneumatic Hammers

Fits SDS Plus &
Chuck Drills
(4-3/4" Drill Depth)

Use cuff D1515S
or D2015S

* Use Universal Taper Adaptor #119219. For hose attachment to adaptor (OD of Adaptor is 1.5") use cuff D1515S (1.5" hose) or D2020S (2" hose).

Use cuff D1520S
or D2020S

Crack Chaser *

* Dust Control Hollow Bits

* Straight or SDS Plus

SDS Plus Bits

Husqvarna 14" Shoe



* Use
Universal
Adapter & cuff
D1215S, D1515S
or D20215S



Use Universal Adapter
& cuff D1215S,
D1515S or D20215S



4" Max Drilling Depth
Use cuff D1215S,
D1515S or D2015S



Use cuff D1215S,
D1515S or D2015S

* Hilti DC-EX 125 / 5"

Hilti Demo Shroud

Worm Drive Shroud

Metabo 7" Shroud

Hilti Drill Shroud



Use cuff D1215S,
D1515S or D2015S



Use cuff D1215S,
D1515S or D2015S



Use cuff D1520S
or D2020S



Use Universal Adapter &
cuff D1215S, D1515S or
D2015S